



WASHINGTON STATE DEPARTMENT OF  
**Natural Resources**

---

**Peter Goldmark** - Commissioner of Public Lands

# Clean Energy on State Lands

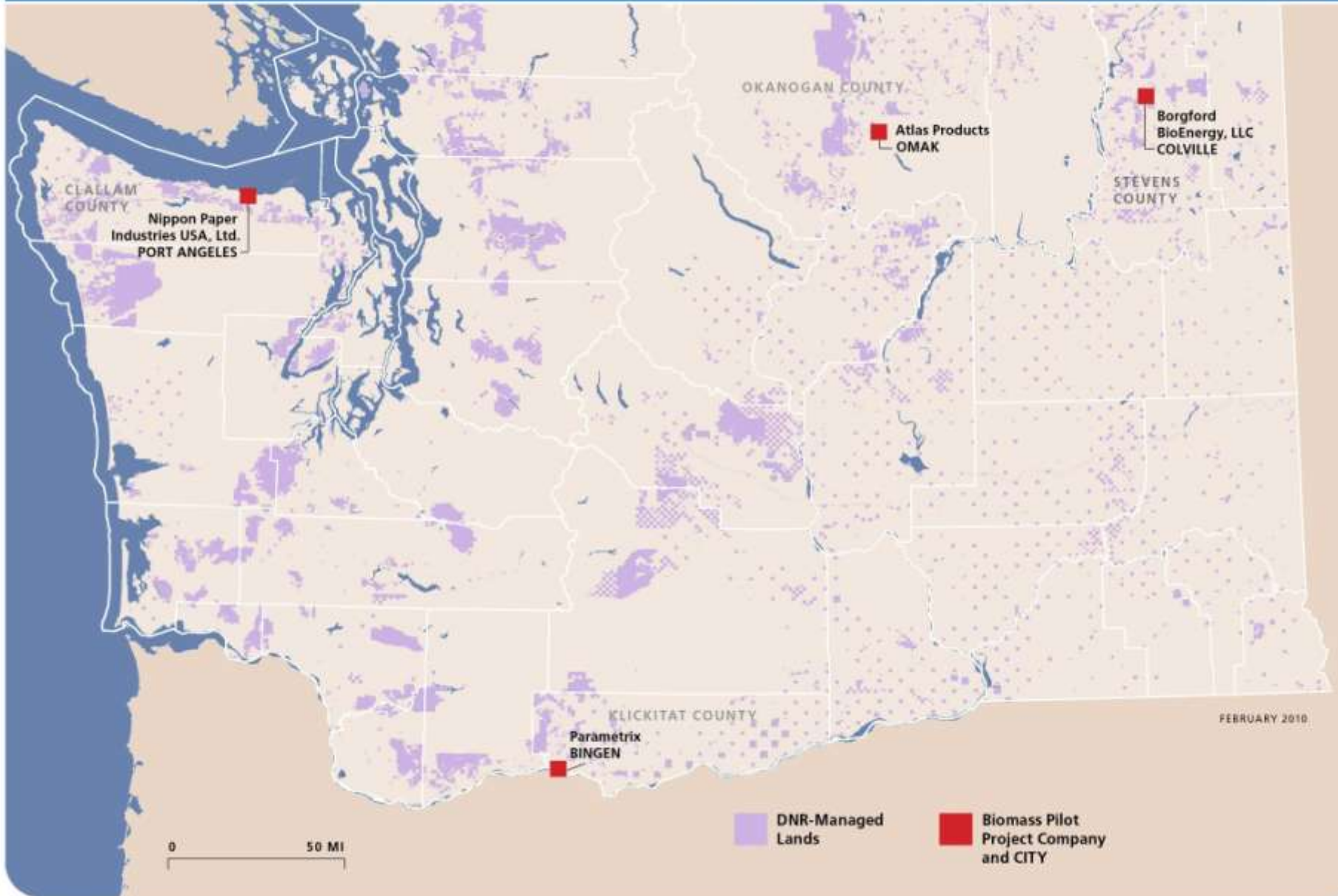
- Wind
- Geothermal
- Tidal
- Forest Biomass



# Forest Biomass Initiative Pilot Projects



WASHINGTON STATE DEPARTMENT OF  
**Natural Resources**  
Peter Goldmark - Commissioner of Public Lands



# Long - Term Supply

- Legislation authorizing long-term supply agreements for forest biomass requires a pragmatic approach
- DNR is engaging in all lands forest biomass supply study with the University of Washington and other partners.
- The supply study will provide DNR with the information we need to ensure both economic and ecological sustainability of the forest biomass that is sold from state lands.



# Highest & Best Use of Resource

- Aviation Fuel
- Drop-in fuel replacements
- Electricity
- Heat Production



# Process Efficiency & Science based decision making

- We do not have resources to waste.
- Case Study: Nippon Paper. The CHP system being planned for their site is over 65% efficient. We need to support efforts like these and encourage the broader use of highly efficient processing systems.
- Science based decision making must be committed to sustainability and transparency



Figure 16.6. Geothermal.





# Benefits to Forest based Biomass beyond Energy





WASHINGTON STATE DEPARTMENT OF  
**Natural Resources**

---

**Peter Goldmark** - Commissioner of Public Lands